

# Nerriga Battery Energy Storage System

## Community Information Sheet – February 2026

North Harbour Clean Energy (NHCE) is proposing to develop a Battery Energy Storage System (BESS) (the Project) which would be located in Nerriga approximately 2km west of Nerriga Road. We're in the early stages of preparing the development application and want to share what we know so far and hear your views.

### Who is NHCE?

NHCE is an Australian company dedicated to owning and operating a portfolio of energy assets, with a focus on energy storage. Our team is passionate about contributing to Australia's clean energy future and using technology and capability to deliver on-demand, clean energy.

Subject to approval, construction is expected to commence in 2027 and take approximately 12-18 months. The expected operational life of the BESS is approximately 20-25 years. However, the project may involve infrastructure upgrades to extend the operational life.

### What is a BESS and why is it needed?

A BESS is an energy storage system that uses a group of large battery units to store excess energy from the grid during periods of high supply (including peak generation periods from wind and solar) and release it when demand is high. This helps stabilise the electricity grid across the day and improves energy reliability.

The final design and layout will be shaped by technical studies and community input as we go through the planning stages. An example of what a BESS looks like is provided in Figure 1.

### Where would it be located?

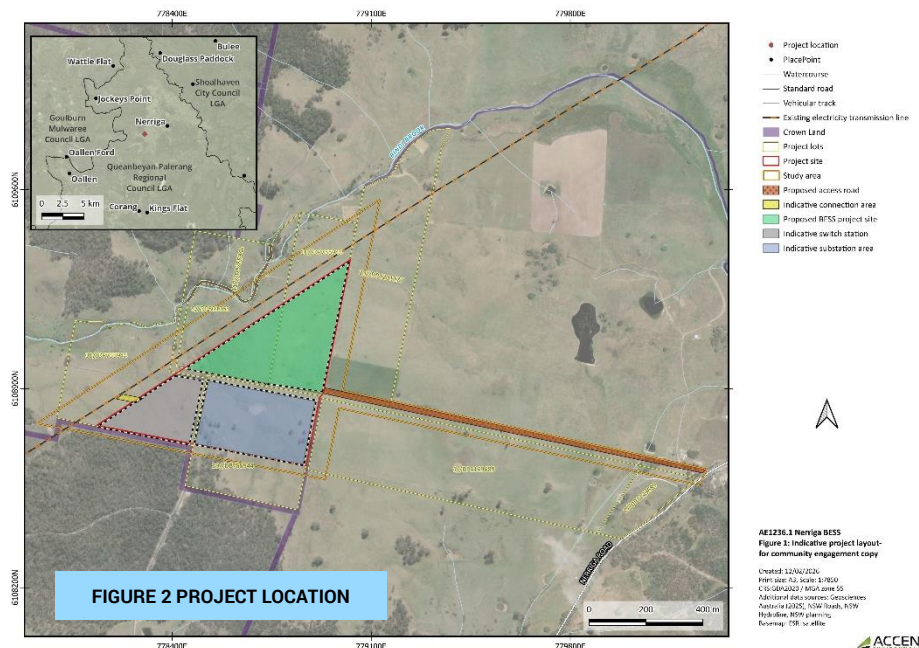
The Project would be located on private land in Nerriga, about 2km to the west of Nerriga Road. An indicative Project layout is provided at Figure 2. After we have commenced more detailed environmental investigations and received community feedback, we can progress the Project design.

### What is the Project?

The Project would involve the construction, operation and decommissioning of a BESS. The built form of the Project includes individual BESS units, a switching station and site infrastructure. The Project would connect to the electricity grid via an existing Transgrid 330 kilovolt (kV) transmission line that runs through the site.



FIGURE 1 EXAMPLE OF A BESS FACILITY





## Planning and Assessment

The Project is defined as State Significant Development (SSD) under NSW planning legislation. We are currently preparing a Scoping Report, which will include early environmental and social studies and community consultation. Once submitted, the NSW Department of Planning, Housing and Infrastructure will issue the Secretary's Environmental Assessment Requirements (SEARs). These set out what we must address in our Environmental Impact Statement (EIS) -which is the "development application" for SSDs - and will include topics such as:

- Social impacts
- Visual impacts
- Traffic and transport
- Noise
- Hydrology
- Biodiversity
- Aboriginal heritage
- Non-Aboriginal heritage
- Hazard and risk

### Project Benefits

- ✓ **Improves grid stability and reliability:** by storing excess power and supplying it when demand is highest.
- ✓ **Contributing to the clean energy future:** by helping to decarbonise the grid.
- ✓ **Long-term local commitment:** with the project owned and operated for its full lifespan.
- ✓ **Local investment:** while the electricity network supplies a much wider area than just Nerriga, the Project would also strengthen the local grid and regional investment
- ✓ **Benefit sharing framework,** shaped directly by local feedback to ensure meaningful and lasting outcomes.
- ✓ **Local economic opportunities,** including up to 100 construction jobs and around five ongoing operational roles, with a focus on prioritising local workers and businesses where possible.

### How you can get involved

NHCE are committed to working with the community to ensure community feedback and values are well understood and incorporated in project design and planning. An engagement program has commenced with residents, local community groups, government and key stakeholders to understand early views on the project, how best to involve you as the project progresses and to explore opportunities to enhance local benefits.

Your feedback will help us design the project responsibly, mitigate impacts and enhance community opportunities. We will keep you informed as the Project progresses and there will be many opportunities to stay involved throughout the planning process.

If you'd like to speak with us or receive project updates, please get in touch.

### Have your say



Scan the QR code or visit the survey link below to share your views. Your input will help shape the Project for the best community outcomes: <https://www.surveymonkey.com/r/NerrigaBESS>

Thank you for your time!

**More information:** <https://nhcleanenergy.com/> or contact our project team:

Casey Joshua Director, Planning <a href="mailto:casey.joshua@northharbourpl.com">casey.joshua@northharbourpl.com</a> +61 2 9137 4142	Carmel Dowling Engagement Officer <a href="mailto:carmel.dowling@northharbourpl.com">carmel.dowling@northharbourpl.com</a>	Thomas Boneham Community Engagement <a href="mailto:thomas@communityengagement.com.au">thomas@communityengagement.com.au</a>
---	--	--