

North Harbour Clean Energy's proposed Upper Hunter Battery Energy Storage System

Community Information Sheet

North Harbour Clean Energy Pty Ltd (NHCE) is preparing an Environmental Impact Statement (EIS) and seeking planning consent from NSW Department of Planning, Housing and Infrastructure (NSW DPHI) to build the new Upper Hunter Battery Energy Storage System (BESS), approximately 12km north of Muswellbrook on vacant land off Campbell Street in Aberdeen NSW. As part of the EIS, Social Aspect Consulting Pty Ltd has been commissioned to assess the development's potential social impacts (positive and negative) and prepare a Social Impact Assessment (SIA). We are seeking your opinions about the development, so please review the information below and provide your feedback.

The proposed development

If approved, the project will involve the installation of lithium-ion battery units with an aggregated capacity of up to 400 MW / 800 MWh, along with cables, a switching station, transformers, carpark, storage area, fencing, lighting, temporary construction site office and amenities at the site. The BESS will be charged using electricity from the grid, store the energy and discharge it back into the grid for consumers across the region to use when needed.

Details of the development

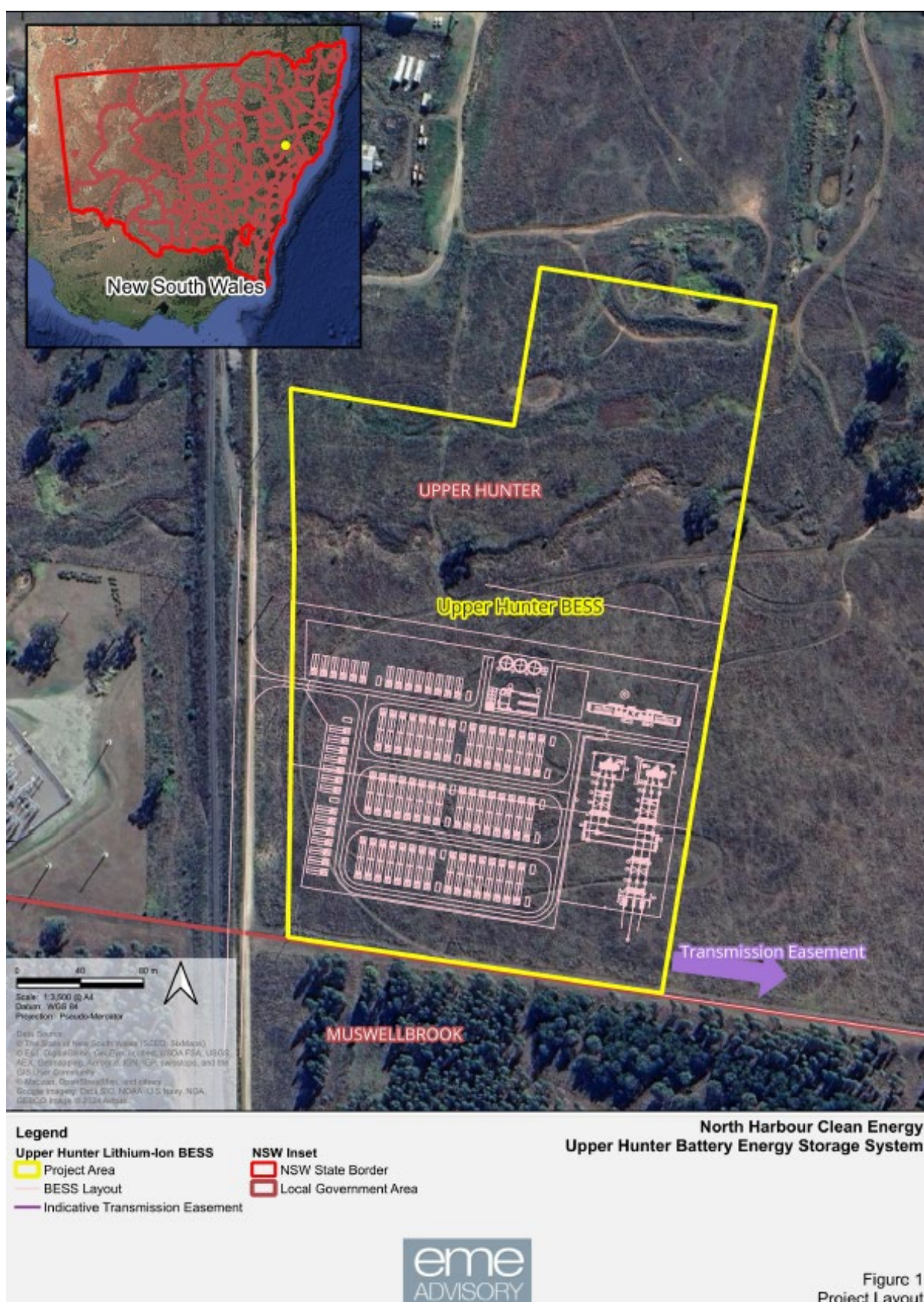
- **Address:** Campbell Street, Aberdeen, NSW
- **Property lots:** 36, 37, 38, 39 and 56 of DP752485 and a paper road
- **Landowner consent:** consent has been obtained
- **Site Area:** 10.5 hectares
- **Local Government Area:** Upper Hunter Shire Council
- **Local Aboriginal Land Council:** Wanaruah Local Aboriginal Land Council
- **Zoning:** E4 – General Industrial
- **Distance from nearest resident:** approximately 160 m
- **Easement pathway:** being negotiated to the 330kV TransGrid line to the east of the Site

Objectives of the development

- Improved network security and diversified energy generation and storage offering within NSW
- Support for increased renewable power generation
- Creation of up to approximately 100 full-time equivalent (FTE) direct jobs during construction, and up to approximately 5 FTE jobs during operations
- Supporting employment, training and supply opportunities for local residents and businesses

Benefit Sharing

A Community Benefit Sharing Strategy will be prepared by NHCE following community engagement and it will be included in the SIA when available.



The image above shows the development site, which comprises two lots (see yellow boundary above) off Campbell Street in Aberdeen. The final BESS design is subject to change and will be confirmed in EIS documents.

Planning application process

The proposed development is classified as a State Significant Development (SSD) according to the *NSW Environmental Planning and Assessment Act 1979*. It requires the preparation of an EIS and an application for planning consent from NSW DPHI.

NHCE has contracted a range of technical specialists to prepare the EIS and SSD application for the project, including Aboriginal cultural heritage, visual impact, traffic and transport, noise and vibration, hazards (including fire), biodiversity, flood impact, waste management, and social impact assessments.

When it is finalised, the EIS including the technical assessment reports will be submitted to NSW DPHI for assessment and made available for public viewing. Details about the planning application and its status are available at the following webpage:

<https://www.planningportal.nsw.gov.au/major-projects/projects/upper-hunter-battery-energy-storage-system>

We invite your feedback

We are eager to gather your opinions about the proposed development via an online survey. The survey would take about 5 minutes to complete and any opinions you provide will assist us to evaluate the development's potential social impacts. Access the survey by visiting the website address below or scanning the QR code with a camera on your mobile device.

<https://forms.office.com/r/g7FaWWSyeK>



More information

For more information about the development please contact Casey Joshua, North Harbour Clean Energy via email (casey.joshua@northharbourpl.com) or telephone (02 9137 4142).

For more information about the social impact assessment, or the survey, please contact Jamie Seaton via email (jamie@socialaspect.com.au) or telephone (0466 413 645).

